

DAVE's LOCKER - List of Durable Medical Equipment Accepted



Standard Walkers



2 wheel Walkers



4 wheel Walkers (Rollators)



Crutches - Axillary



Crutches - Forearm



Canes - Single Point



Quad Canes



Hemi Walker



Bedside Commode



Shower-Tub Bench
(with or without arms)



Shower-Tub Transfer Bench





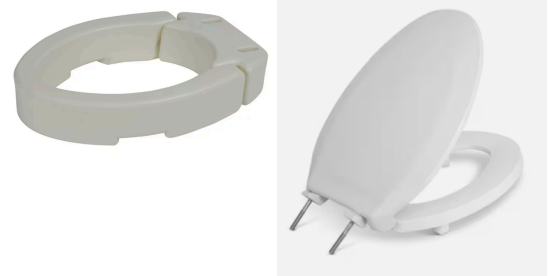
Toilet Safety Rails - Attached to Toilet



Toilet Safety Rails - Unattached



Toilet Seat Raiser - with or without arms



Toilet Seat Riser (Bolt On)



Bed Canes



Knee Walkers



Knee Scooters



Transport Wheelchairs



Wheelchairs - Manual - *Standard Folding*



Sit to Stand Aid Lift (Sara Stedy)
(*manual only*)



Lift Chair (sit-to-stand) Recliner



Hospital Overbed Bedside
Table



Extended Grabbers



Grab Bars



Sock Aides



Walking Boots



Post-Op Walking Shoes



Knee Braces (*non-customized*)



Wrist Braces



Ankle Braces



Diapers Disposable



Disposable Underwear/Briefs



Bed Pads
(Disposable and Reusable)



Basic Electric Hospital Beds (manufacturers - Invacare, Medline, Drive)

Bed Size 36 inches X 80 inches.

Beds must have 1) removable Head and Foot Boards

2) have a Steel Frame with Springs (***please see illustration above***)



Hospital Bed Mattresses must have a medical grade nylon, fluid proof cover. Can only accept mattress size 36 inches by 80 inches



Slide Boards



Foldable Wheelchair Ramps (*up to 8 feet in length when unfolded*)



Air Pressure Mattresses



Floor to Ceiling Safety Poles

WE CANNOT ACCEPT THE FOLLOWING ITEMS:

- Electric Mobility Scooters
- Hoyer Lifts (manual or electric)
- Bariatric or Platform Hospital Beds
- Oxygen Concentrators (portable or stationary)
- Oxygen tanks
- Oxygen carriers
- CPAP machines
- Tubing for Oxygen or CPAP machines
- Wound Care Supplies